

---

# Search for GeV counterparts of TeV sources in the AGILE-GRID data

LONGO, F. , **LUCARELLI, F.**, PITTORI, C., RAPPOLDI, A., VERRECCHIA, F.  
(presented by F. Verrecchia)



# Two “lives” of AGILE

	<b>AGILE-POINT</b>	<b>AGILE-SPIN</b>
<b>time period</b>	<b>Jul.07 – Oct.09</b>	<b>Nov. 2009 - today</b>
<b>attitude</b>	<b>fixed</b>	<b>variable (spinning ~ 1°/sec)</b>
<b>sky coverage</b>	<b>1/5</b>	<b>~ 70-80 %</b>
<b>1-day exposure (≤ 30 deg off-axis, @ 100 MeV)</b>	<b>~ 2x10<sup>7</sup> (cm<sup>2</sup> sec)</b>	<b>(0.5-1)x10<sup>7</sup> (cm<sup>2</sup> sec)</b>

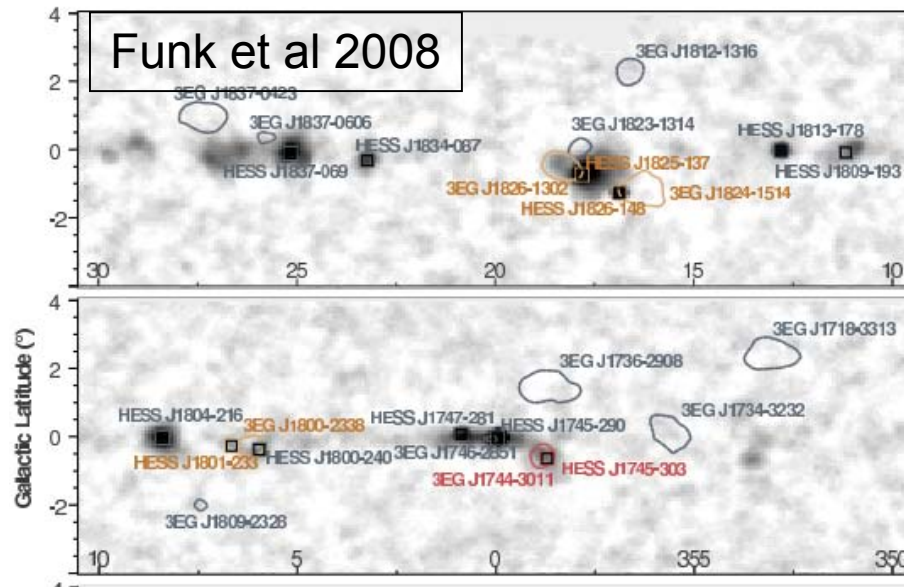
**1-yr Flux sensitivity in spinning (E>100 MeV):**

$$1\div 8 \times 10^{-7} \text{ ph cm}^{-2} \text{ s}^{-1}$$



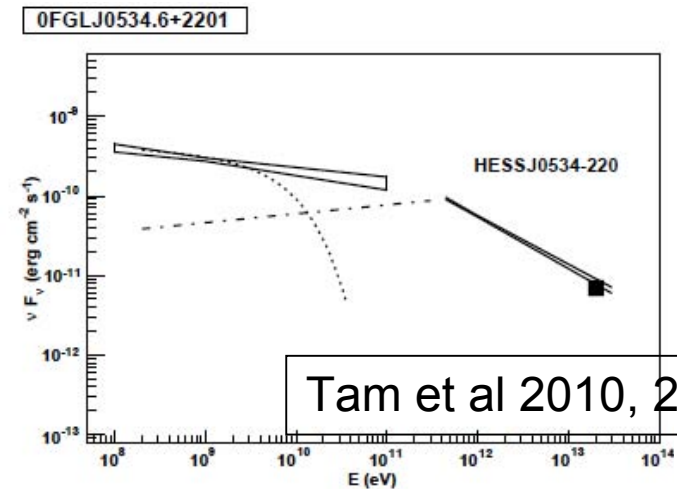
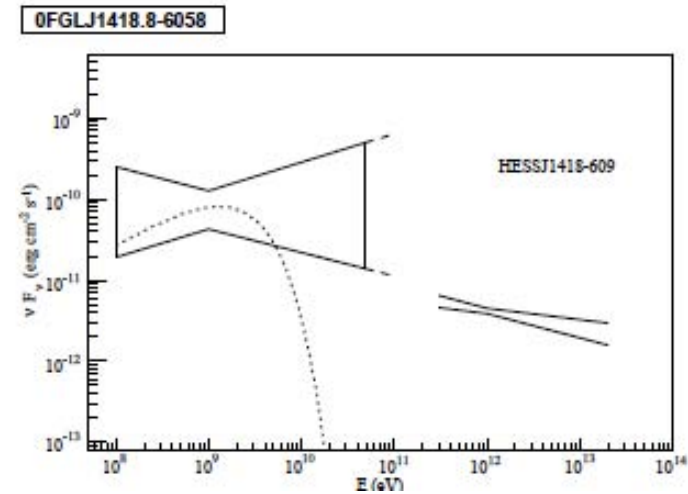
# GeV-TeV correlation

## HESS-EGRET correlation



- Spatial correlation.
- SED studies => emission mechanisms.
- Identification of UNID TeV sources.

## TeV-0FGL/1FGL correlation



Tam et al 2010, 2011



# AGILE results on specific TeV sources

---

- **Extra-galactic:**

- Mkn 421 (Donnarumma et al. 2009, ApJ 691)
- S5 0716+714 (Giommi et al. 2008 A&A 487, Chen et al. 2008 A&A 489)
- W Comae (Acciari et al. 2009, ApJ 707)
- PG 1553+113 (Aleksic et al. 2010, A&A 515)
- PKS 1510-089 (Pucella et al. 2008, A&A 491, D'Ammando et al. 2009, A&A 508)

- **Galactic:**

- IC 443 (Tavani et al. 2010, ApJL 710)
- SNR W28 (Giuliani et al. 2010, ApJL ...)
- Cygnus X-1 (Sabatini et al. 2010, Del Monte et al 2010)
- Vela X (Pellizzoni et al 2010, Science 327)
- Crab Nebula (Tavani et al. 2011, Science 311)



# Systematic Search for TeV counterparts

---

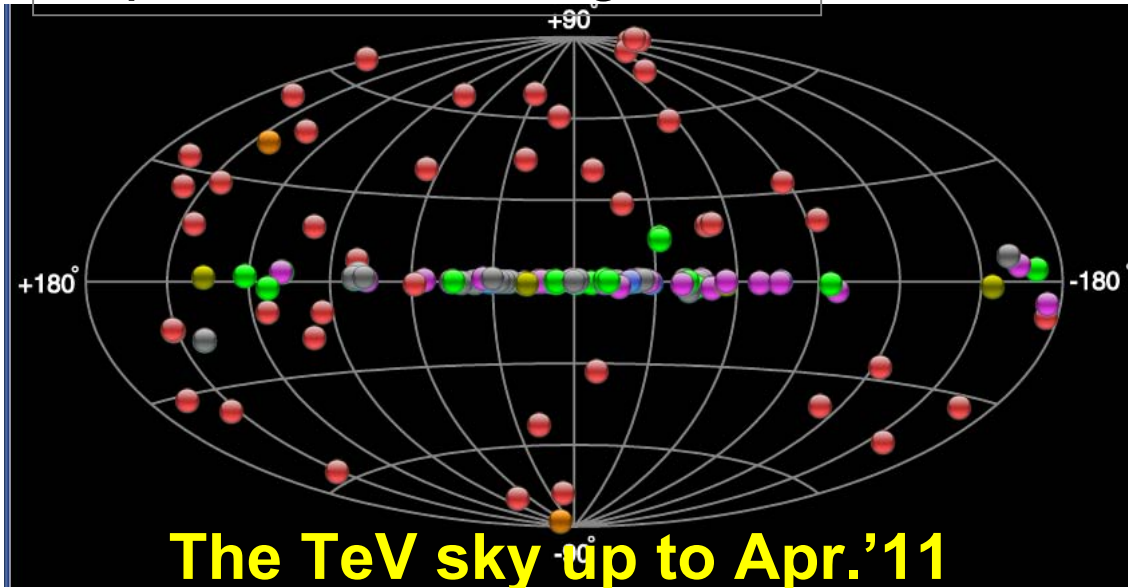
*Rappoldi et al. (2009), Lucrelli et al.(2011)*

- **Complete automated search for  $E > 100$  MeV sources spatially correlated with known TeV sources.**
- **Using AGILE-GRID pointing period of 2.3 yrs**
- **Official GRID public data archive provided by ASDC.**
- **Data analysis criteria: multi-source Maximum Likelihood (ML) analysis around the TeV position (Mattox et al. 1996, Chen et al. 2010)**



# TeV source input list

<http://tevcat.uchicago.edu/>



PWN	24
Starburst	2
AGN	45 (HBL 29)
Other Galact	3
SNR /MC	14
UNID	25
PSR, XRB	3
<b>Total:</b>	<b>116 sources</b>

Revision of all TeV positions made at @ ASDC  
(Carosi, Lucarelli, Antonelli and Capalbi)

**New TeV source catalog now available at the ASDC  
interactive web pages (<http://www.asdc.asi.it/tgevcat/>)**



# Preliminary Results

Source Class	TeV Catalog	Detections $\sqrt{\text{TS}} > 4$
AGN (HBL, LBL, ...)	45	10
Starburst	2	--
PWN	24	8
SNR	14	5
XRB	3	1
UNID	25	6
Other Galactic	3	1

~30% of TeV sources show counterparts in AGILE first 2.3yrs data

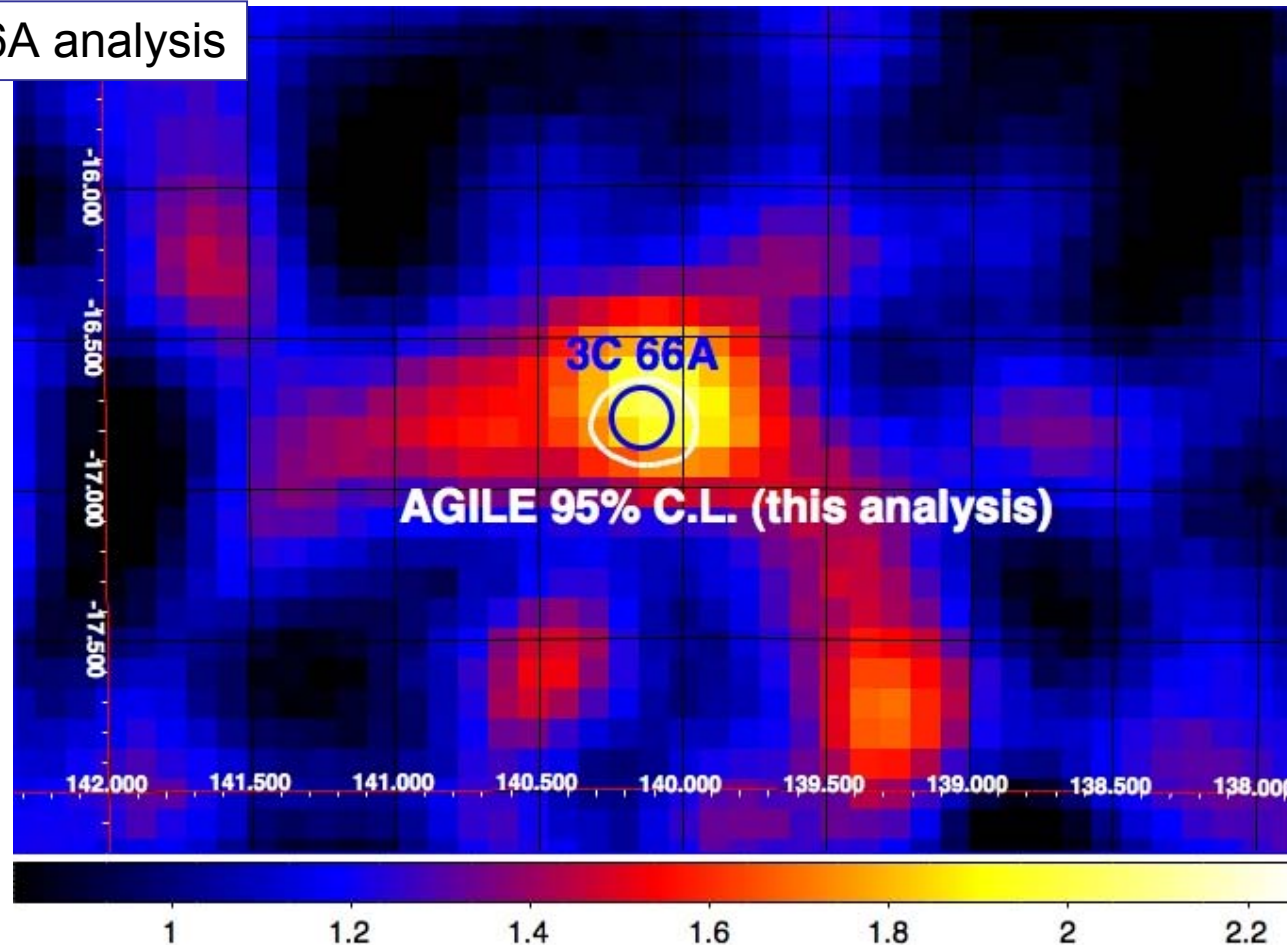


# Preliminary Results

Example: 3C 66A analysis

Source included and detected in a variability analysis of the full Pointing OB archive, on an updated source list

(Verrecchia et al. to be submitted)



A few GRID detections (1-2 HBL, few Galactic) not in 2FGL Cat.





# AGILE-GRID lightcurves ( $E > 100$ MeV)

---

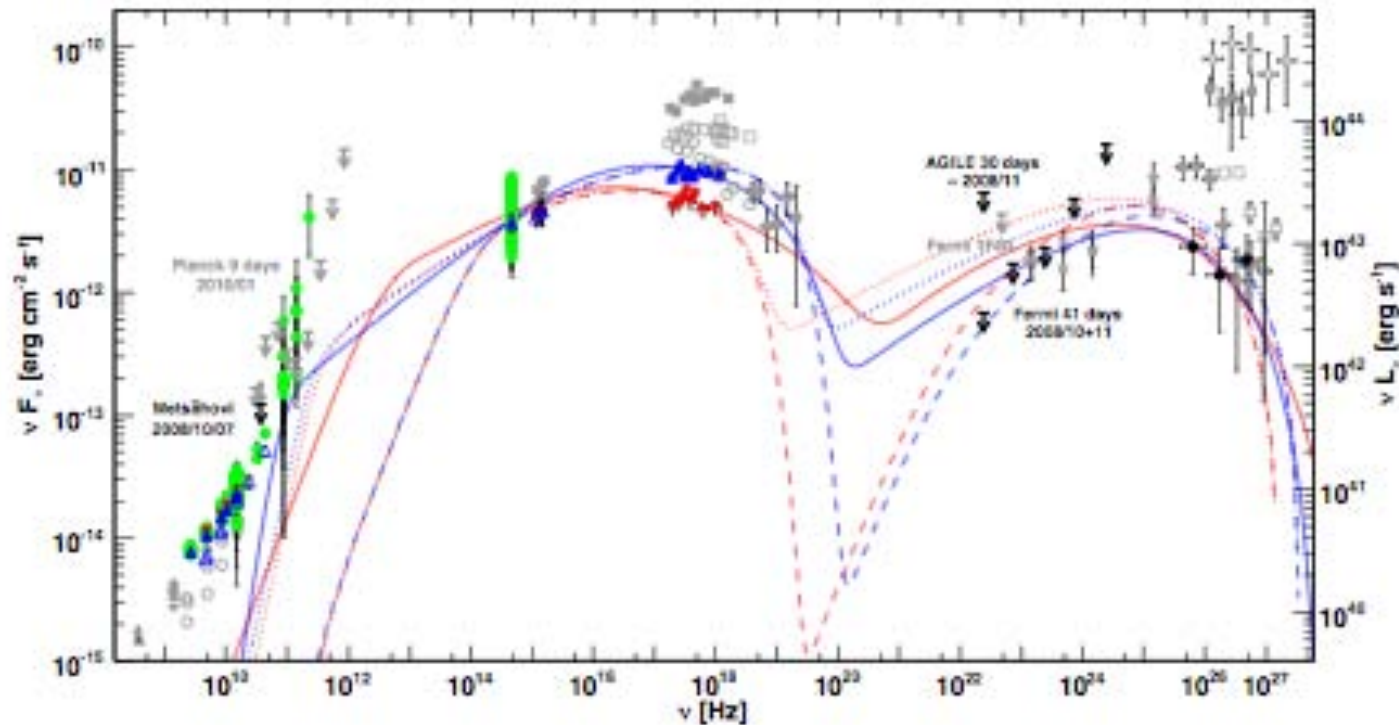
- **GRID Level 3 Archive: 1-day integration EXP, COUNTS and GAS maps produce from the official LV2STD AGILE archive, covering the whole AGILE data.**
- **Using GRID L3 archive, we can investigate the behaviour of the TeV AGN sources at GeV energies over ~6 years (July 2007 -- Aug. 08 not covered by Fermi-LAT), producing lightcurves with different binning (7- and 28-days).**

**Comparison with the Pointing OB analysis source sample lightcurves**



# MWL campaign on TeV sources

- 1ES2344+514 (Rugamer et al., arXiv:1211.2608v1)



More to come: PKS1510 (Feb. 12 flare), Mrk180, 1ES1011+496.

# Summary

---

- A systematic search of MeV-GeV counterparts of TeV sources in the AGILE first 2.3 yrs of data has been performed.
- The preliminary results show  $E > 100$  MeV counterparts for  $\sim 30\%$  of the 116 TeV sources analysed.
- Detailed analysis is ongoing.
- Upgrade of the analysis using latest calibration matrices (I0023) and updated TeV source catalog is ongoing.
- GRID Level 3 Archive helps to investigate flaring activity over more than 5 years of data in a very short computing time.

